

Dev Ashish

Plot No. 11-12, Sector - 9, Taloja, Panchanand, Navi Mumbai.

Spacious 1-2 BHK Flats





THE PROJECT

- Clear title CIDCO Transfer plot
- G+7 Storey project
- Residential cum commercial project
- Exclusive 1BHK & 2BHK flats
- Quality construction with earthquake resistant RCC structure
- Well planned flats with optimum Utilisation of space
- Reputed Lifts make
- Decorative Entrance Lobby

THE AMENITIES

FLOORING

- Vitrified tile flooring in living, bedroom & kitchen.

KITCHEN

- Granite platform with stainless steel sink.
- Ceramic tile dado above kitchen platform.

BATH / WC

- Concealed plumbing with good quality sanitary fittings.
- Reputed plumbing fittings.
- Hot & Cold water mixer in bathroom.
- Glazed tiles dado up lintel level.
- Ceramic tile flooring in bath & WC.
- Good quality aluminium louvers in bath & WC.

DOORS

- Main door with Decorative Laminated finish & internal wooden doors.
- Marble frame for all the doors of bath & WC.
- Wooden door frames for others rooms.

THE LOCATION

- Located on old Mumbai Pune Road (Nh4) & Touching Kharghar Node.
- Planned & approved by CIDCO.
- Superior Educational & Medical Facilities in proximity.
- 5 Mins. driving distance from Taloja Railway Station
- 2 Mins. driving distance from METRO NO. 11
- 15 mins. drive to Navi Mumbai International Airport.
- 5 mins. drive from Mumbai - Pune Express Highway.
- Upcoming Asia's largest Central Park, Golf Course, Fun City (like disney world - Sentosa Island) & TATA Hospital lies in the proximity

- Main door with good quality night latch, heavy duty airdrop, Safety chain, peephole & decorative handle.

WINDOWS

- Powder coated aluminium sliding windows in living, bedroom & kitchen.
- Marble sill for all the windows of bath & WC.

ELECTRICAL

- Concealed copper wiring with modular switches & telephone & cable points in living & bedroom.

WALL FINISH

- Internally good quality distemper paint for entire flat.
- Externally good quality semi acrylic paint.

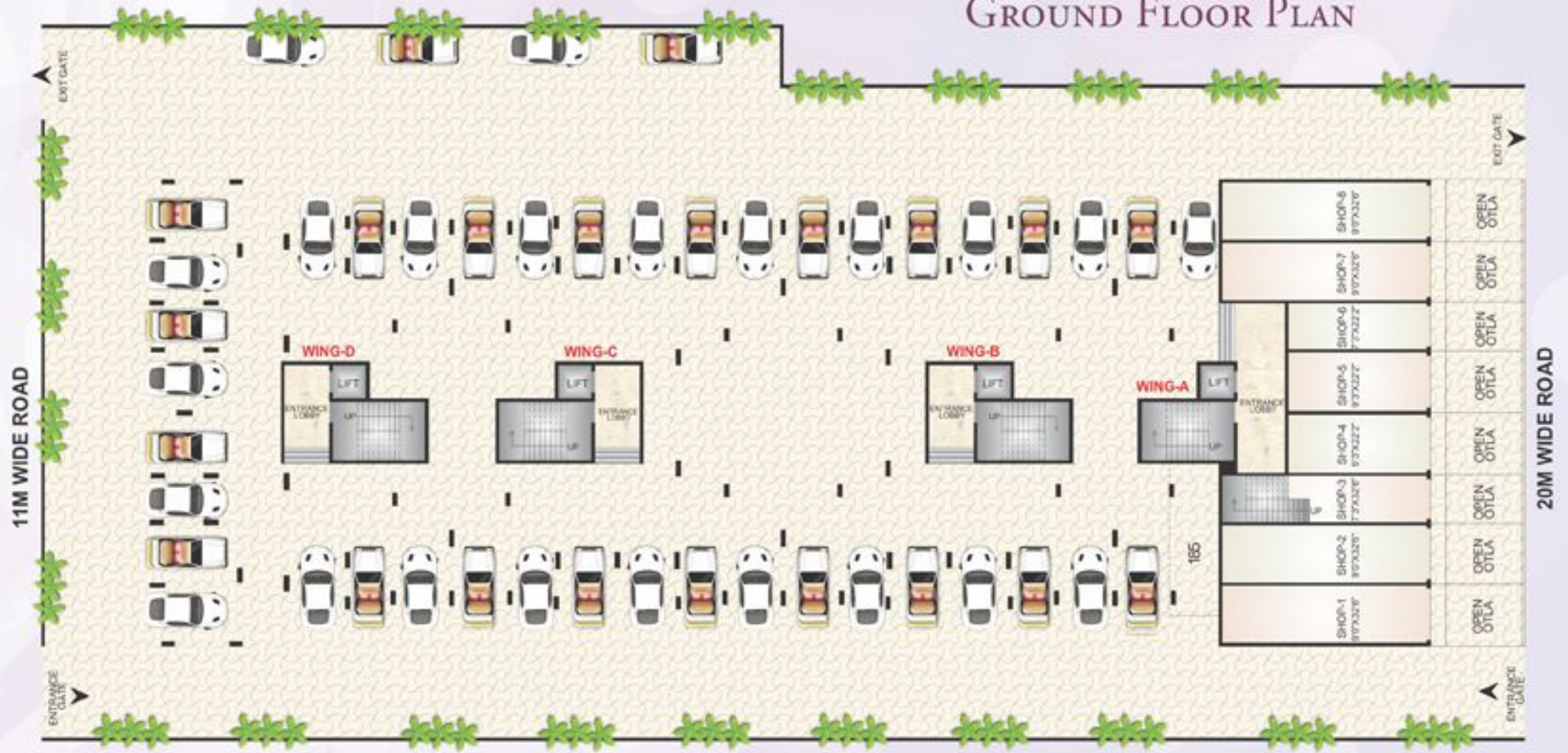
WATER TANK

- Under Ground and overhead water tank with adequate water storage capacity

TERRACE

- Special water proofing treatment with china chips

GROUND FLOOR PLAN



FIRST FLOOR PLAN



SECOND FLOOR PLAN



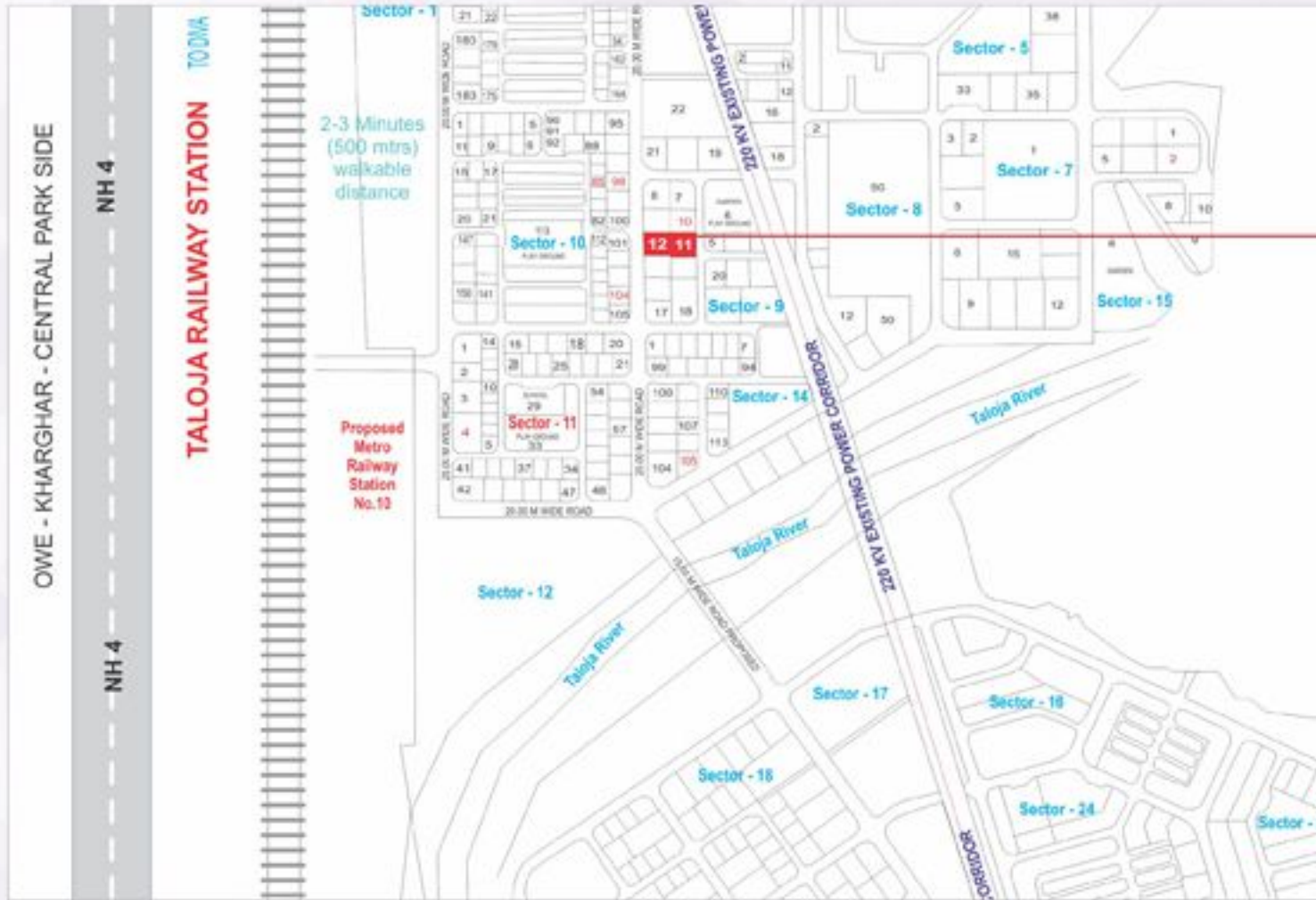
TYPICAL FLOOR PLAN (3RD - 5TH - 7TH)



TYPICAL FLOOR PLAN (4TH - 6TH)



LOCATION MAP



DEV ASHISH



Plot No. 11/12, Sector - 9, Taloja, Panchanand, Navi Mumbai.

SOME OUR COMPLETED PROJECT



Dev Darshan Complex



Rachana Heights



Dev Prasad Complex

Project by



DEVKRUPATM
ENTERPRISES
 ENGINEERS & BUILDERS
 DESIGN | DEVELOP | DELIVER

Contact : 9819821616 / 9820170063

SITE OFFICE : Plot No. 11/12, Sector - 9, Taloja, Panchanand, Navi Mumbai.

Architect
PATEL & ASSOCIATES

RCC Consultant
S.R. RAO

Legal Advisor
S. M. LAD

Vastu Consultant
MR. BHARAT MANIYAR